

**BATIMENT 6**

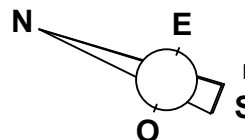
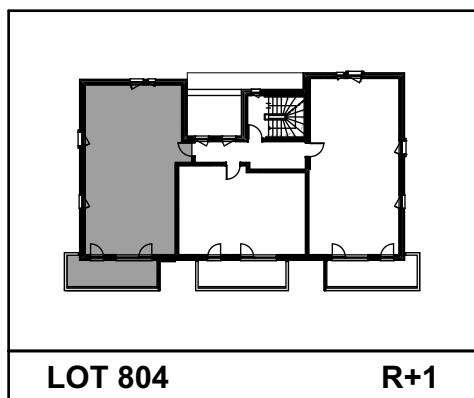
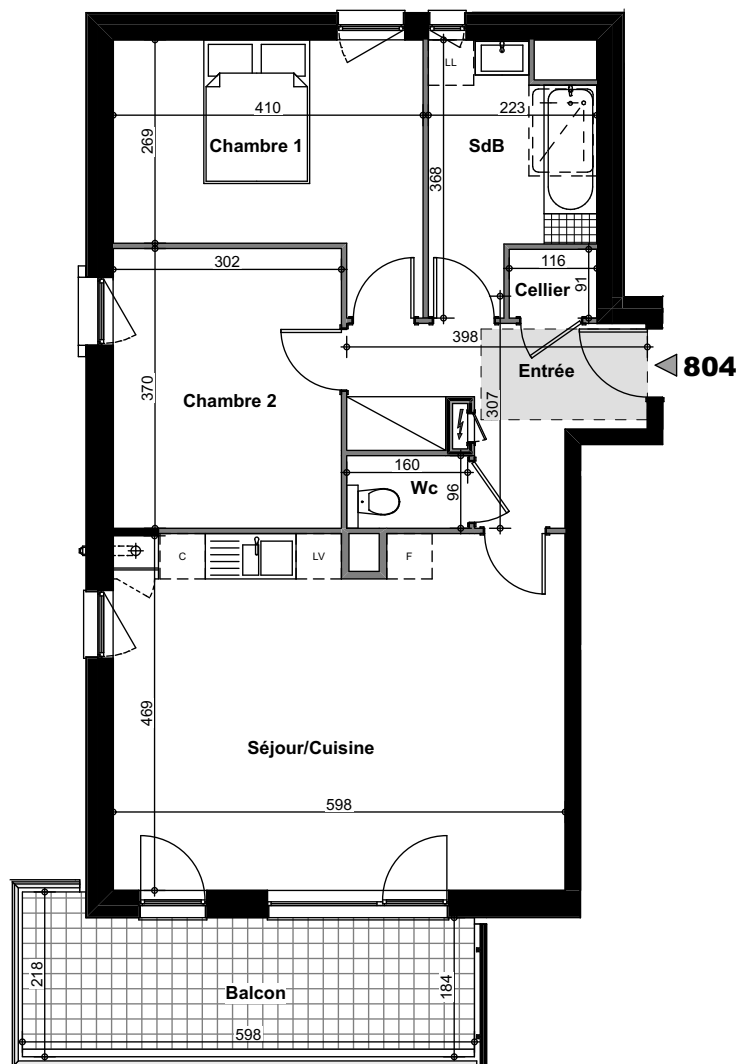
**3 PIECES - NIVEAU 1**

**LOT 804**

ENTREE / PLACARD	:	7.34 m <sup>2</sup>
SEJOUR / CUISINE	:	27.85 m <sup>2</sup>
CHAMBRE 1	:	12.03 m <sup>2</sup>
CHAMBRE 2	:	11.17 m <sup>2</sup>
SDB	:	6.46 m <sup>2</sup>
WC	:	1.56 m <sup>2</sup>
CELLIER	:	1.06 m <sup>2</sup>

**TOTAL HABITABLE : 67.47 m<sup>2</sup>**

**SURFACE BALCON : 11.29 m<sup>2</sup>**



BIK Architecture Grand Est  
 Date : 20/09/2018